

# Sapphire

(SHDSS Single Cable Cleat)

## Features

- Third party certification to IEC 61914:2009
- 316L stainless steel
- 32 - 150mm in 11 sizes for single / partial formation
- Operating temperature -40°C to +60°C
- Low Smoke & Fume (LSF) liners as standard
- Combined single (M12) and two bolt (M10) fixing design



[www.cmp-products.com](http://www.cmp-products.com)

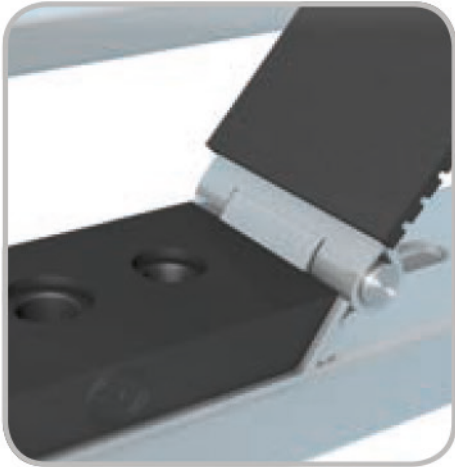
FI494 REV 1 06/16

# Sapphire (SHDSS Single Cable Cleat)

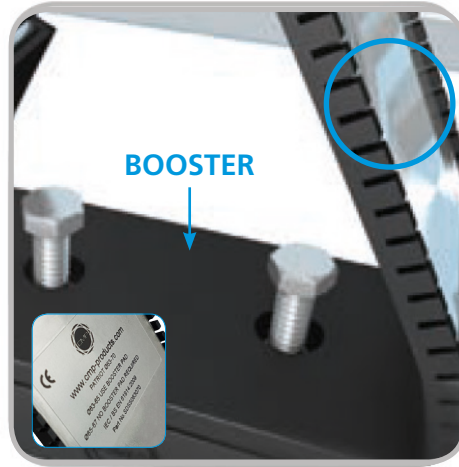


**Cleat Installation  
Instructions**

# CMP Sapphire Installation Instructions



**1** Unhinge Cleat



**2** Insert base booster if required

See cleat marking on circled section above



**3** Secure cleat to mounting surface using 2 x M10 or 1 x M12



**4** Add washer and nut on each side

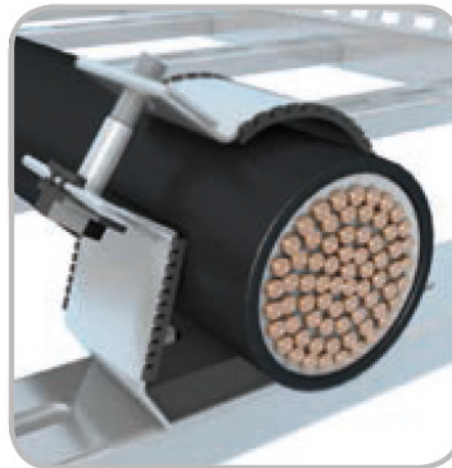


**5** Tighten down to specified torque rating. Rating as follows 8N/m

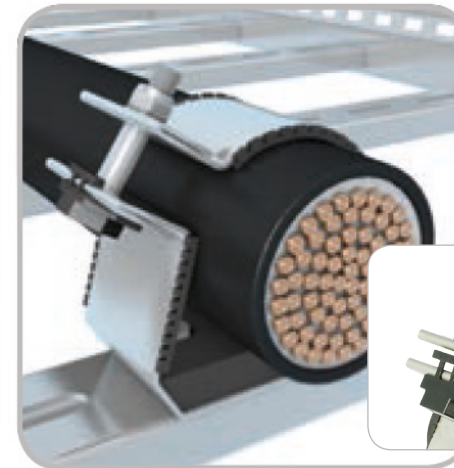
2



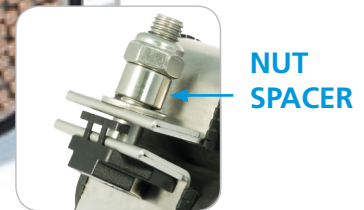
**6** Place cables into the cleat



**7** Pull cleat arm over cable



**8** Use supplied mouthpiece fittings and tighten nut to correct torque 8N/m with 19mm spanner



3